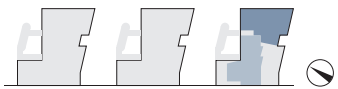
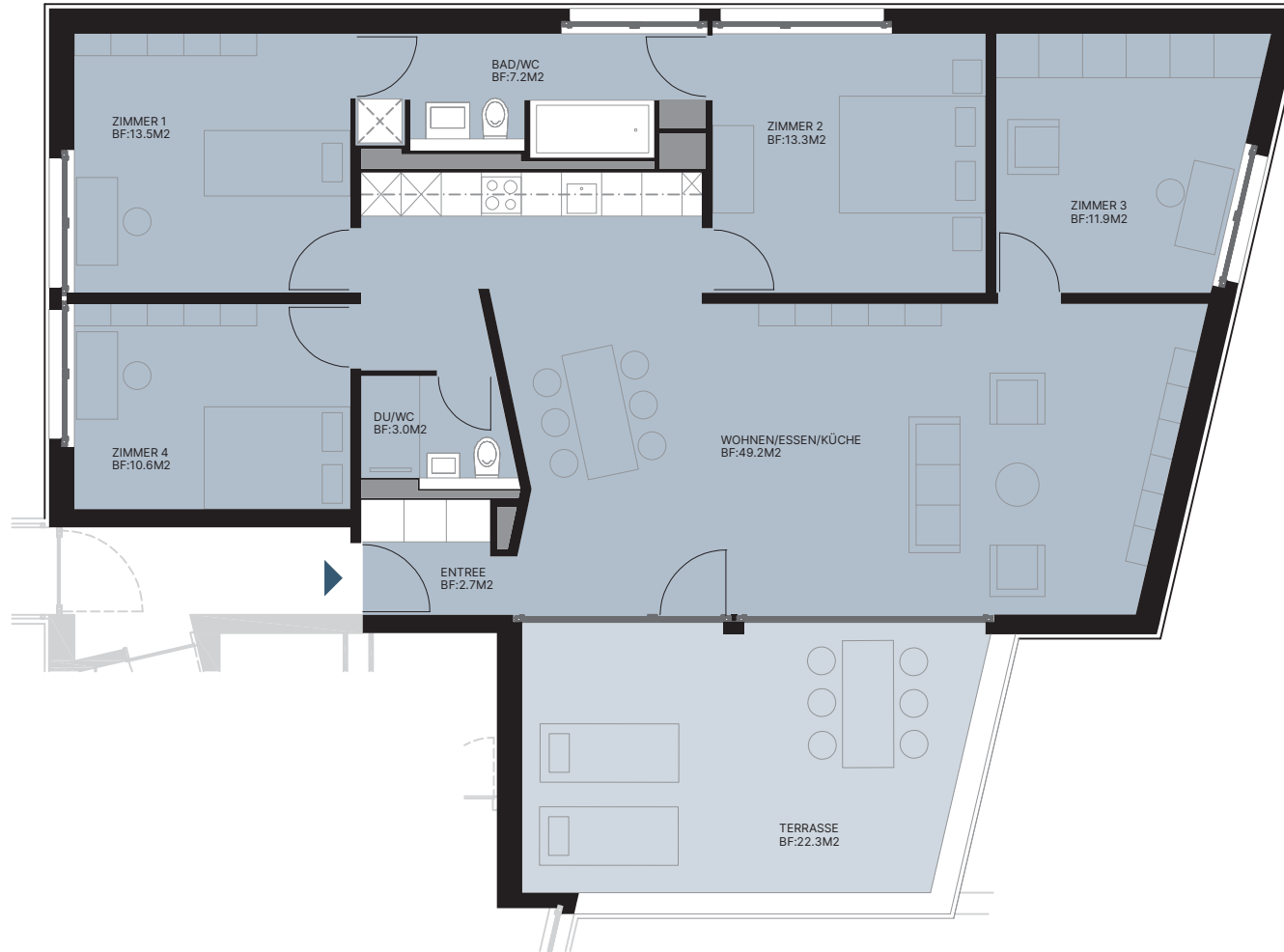


Stand: per 2. Juni 2022



**Wohnung C.331**  
**Attikageschoss**

5½-Zimmer

**Nettofläche**  
 111.4 m<sup>2</sup>

**Raumhöhe**  
 2.40 m

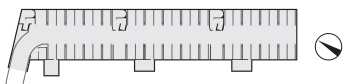
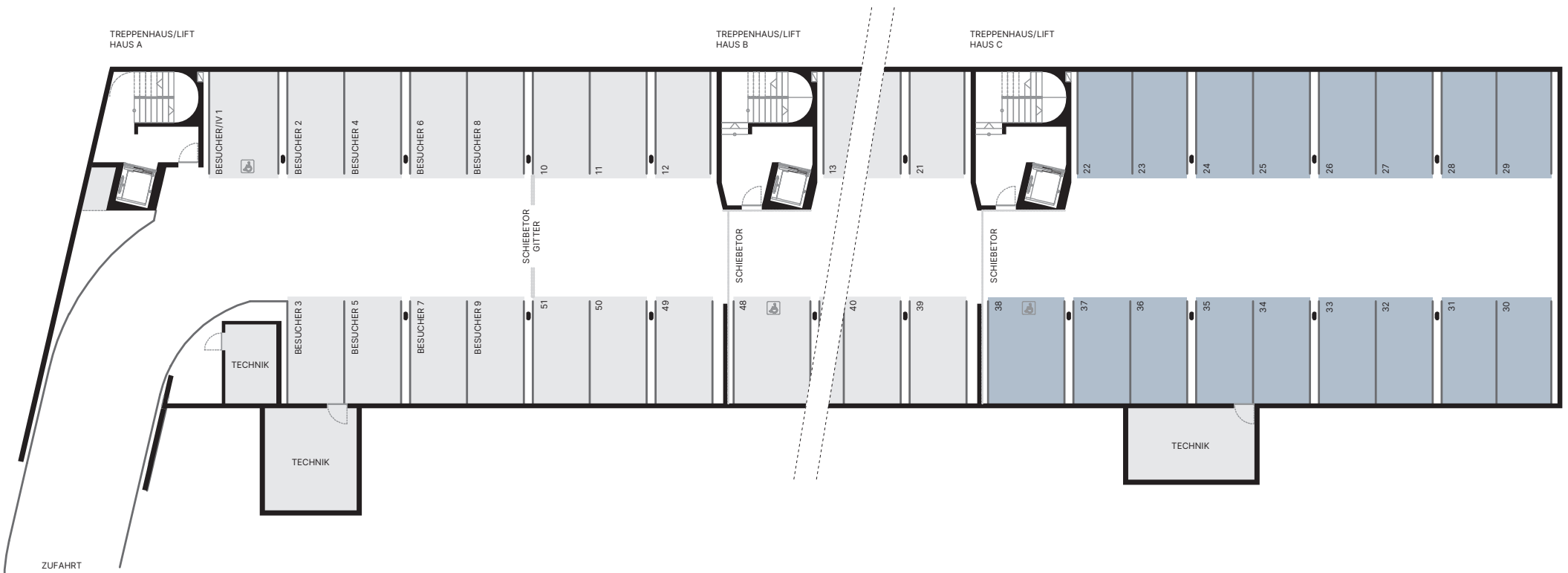
**Terrasse**  
 22.3 m<sup>2</sup>

**Keller**  
 12.9 m<sup>2</sup>





**Erdgeschoss**  
Keller/Lagerraum



**Tiefgarage**  
Parkplätze